

Organisational Membership of CILTSA



The Chartered Institute of
Logistics & Transport

South Africa

Who We Are

The Chartered Institute of Logistics and Transport (CILT) is the international professional body for Logistics and Transport professionals. With a network of National Councils and Sections in over 30 countries, CILT services the interests of over 30 000 members. CILT is a professional body committed to the advancement of Logistics and Transport. CILT established a Section in South Africa, known as CILTSA, in December 2002.

Worldwide Mission

To be recognised as the leading worldwide source and assurance of excellence for Logistics and Transport professionals.

Aims and Objectives

- To establish and maintain the professional standing of its members so that they are recognised for their superior ability and expertise to create world-class Logistics and Transport value within their organisations and South Africa.
- To support the transformation of the profession by transferring skills to young professionals from former disadvantaged communities through appropriate mentoring and career development initiatives to be inclusive rather than exclusive.
- To promote the study of the science and the art of Logistics and Transport.
- To co-operate with the educational sector and with other professional institutes to raise training and educational standards, in keeping with our Code of Professional Conduct.
- To foster investigation and research into the development and improvement of Logistics and Transport.
- To hold regular meetings, conferences and events on Logistics and Transport.
- To optimise the use of Information Technology in Logistics and Transport.
- To provide professional inputs to the industry, government and the community.
- To promote safety and security in all modes of transport.

What we are not

- A political body.
- Committed to a singular ideological or modal view of transport.

Benefits of Organisational Membership

- Certificate of affiliation as an Organisational Member.
- CILTSA support to maximise the PR potential of affiliation.
- Access to a global database of CILT Organisational Members worldwide for synergistic business development and networking purposes, subject to data protection where required.
- Facility to promote your Organisational Membership of CILTSA on your stationery and promotional material eg printing of CILTSA logo on your letterheads, business cards etc.
- Access to CILTSA skills, resources, and expertise at Section level.
- Regular circulation of copies of CILTSA publications, such as the CILTSA newsletter, *CILT World*, etc.
- Executive search and recruitment through CILT publications and websites on discounted payment.
- Preferential rates for advertising within CILTSA publications where appropriate.
- Discounted participation in CILTSA and events and CILTSA-supported events, activities, and conferences where appropriate.
- Nomination of employees (according to company size) to receive correspondence and participate in CILTSA activities.
- Acknowledgement in CILTSA publications and websites as Organisational Members.
- The meaningful kudos of formal association with the worlds most established association for Logistics and Transport professionals.
- Networking opportunities.

Aims of Organisational Membership

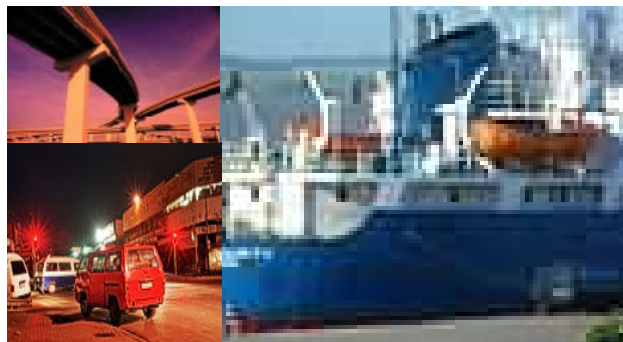
- To encourage younger staff members to join in the activities of the Institute and through this to promote their professional development and networking ability
- To improve their understanding of the interdependence of all areas of the supply chain and the necessity for the integration of processes to achieve a seamless continuum and the optimum outputs for the consumer
- To encourage them to move towards the attainment of Chartered membership as a professional qualification in the field of Logistics and Transport.
- To strengthen the ties between the industry and the Institute so that activities of the institute are better focused and the delivery of membership value is increased to the mutual benefit of all parties
- To foster and improve knowledge and expertise and reward the application of professional principles to the management and execution of businesses in the Logistics and Transport field
- To provide a forum in which all views can be exchanged and knowledge increased.



CILTSA – Code of Professional Conduct

Members of The Chartered Institute of Logistics and Transport are bound to support the general objectives of the Institute's Charter at all times. The Institute's professional conduct rules ensure that all members agree to:

- *Act responsibly towards the welfare, health and safety of all members of their organisation and the impact of logistics and transport on the environment and the community in general*
- *Uphold the integrity and professionalism of the logistics and transport industry*
- *Continue their professional development throughout their careers and actively assist and encourage fellow members as well as non-members to advance their logistics and transport knowledge and expertise*
- *Strive to serve the interests of their employers loyally without compromising their professional integrity or ethics*
- *Carry out their duties in such a way as to promote a professional image of The Chartered Institute of Logistics and Transport and the logistics and transport industry overall*
- *Build their professional reputation on merit and compete fairly where competition is appropriate*
- *Actively promote international understanding, goodwill and co-operation among those in the logistics and transport sectors.*



Membership Fees

Subscription Fees (October 2007 to September 2008)

Category Code	Annual Subscription	Entrance Fee	Reps
Non-Profit (Registered Section 21 company)	R1100	R 530	2
X – Small and Medium sized companies (1 to 50 employees)	R2 100	R 530	3
Large companies (>51 employees)	R3 200	R1 060	5



CILTSA Contact Details

P O Box 44945, Linden, 2104

Tel: 011 789-7327 / 787-9127

Fax: 011 787-7865

E-mail: cvlarkin@ciltsa.org.za
 Website: www.ciltsa.org.za

Published: November 2007



The Chartered Institute of
Logistics & Transport

South Africa